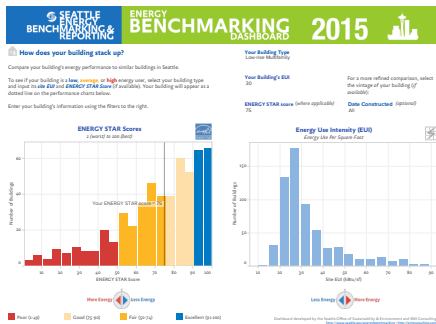


2015 Seattle Energy Performance Ranges by Building Type

Building Type	2015 Annual Energy Use Intensity (Site EUI in kBtu/sf)					Number of Buildings	Year Built (median)	Size (median sf)	EPA ENERGY STAR Score (median) ¹
	Median EUI	Lowest Use (1st Quartile)	Medium-Low (2nd Quartile)	Medium-High (3rd Quartile)	Highest Use (4th Quartile)				
Low-rise Multifamily ²	29.1	≤24	25-29	30-36	≥37	974	1978	29,097	77*
Mid-rise Multifamily ²	32.9	≤27	28-32	33-42	≥43	516	1998	51,861	87*
High-rise Multifamily ²	47.3	≤37	38-47	48-56	≥57	98	1982	146,157	60*
Small- to Mid-size Office ³	52.3	≤37	38-52	53-69	≥70	303	1964	38,073	75
Large Office ³	56.4	≤47	48-56	57-72	≥73	147	1983	201,480	84
Warehouse	25.8	≤13	14-25	26-44	≥45	186	1964	41,028	57
Distribution Center	26.6	≤18	19-26	27-40	≥41	53	1967	49,918	53
Self-storage Facility	14.4	≤9	10-14	15-29	≥30	27	1956	39,952	NA
Refrigerated Warehouse	48.8	≤28	29-48	49-104	≥105	12	1958	34,375	73 ⁵
K-12 School ⁴	37.1	≤32	33-37	38-49	≥50	121	1962	55,513	84
Retail Store	56.1	≤38	39-56	57-83	≥84	97	1966	42,146	72
Hotel/Motel	76.9	≤57	58-76	77-96	≥97	71	1977	88,502	62
Worship Facility	32.1	≤21	22-32	33-40	≥41	67	1951	26,373	70
Medical Office	80.1	≤65	66-80	81-104	≥105	42	1984	68,803	56
Senior Care Community	65.6	≤48	49-65	66-106	≥107	41	1987	90,383	55
Hospital	209.4	≤194	195-209	210-219	≥220	9	1960	483,520	45 ⁵
Supermarket	262.0	≤210	211-262	263-296	≥297	37	1996	41,447	39
Restaurant	150.7	≤91	92-150	151-203	≥204	12	1921	29,910	NA
Residence Hall	54.9	≤31	32-54	55-76	≥77	21	1970	33,448	69
University	77.5	≤46	47-77	78-152	≥153	37	1967	84,459	NA
Mixed Use Property	56.1	≤39	40-56	57-89	≥90	122	1961	42,716	74
Other	78.1	≤43	44-78	79-126	≥127	251	1969	40,263	60

- ¹ ENERGY STAR median only includes buildings that had a score available and therefore may not include all buildings with an EUI.
- ² Low-rise multifamily defined as 1 to 4 floors, mid-rise multifamily defined as 5 to 9 floors, and high-rise multifamily defined as 10 floors or greater.
- ³ Small- to Mid-size Office categorized as buildings of 20,000 to 100,000 square feet. Large Office categorized as buildings 100,000 square feet or greater.
- ⁴ Seattle Public Schools are reporting the academic year of September 2014 – August 2015.
- ⁵ Building type has fewer than 10 ENERGY STAR scores.
- * Multifamily ENERGY STAR scores exclude buildings with default values.



See how your building stacks up. Visit the Seattle Benchmarking Dashboard.
www.seattle.gov/energybenchmarking